

This manual is for reference and historical purposes, all rights reserved.

This page is copyright© by M. Butkus, NJ.

This page may not be sold or distributed without the expressed permission of the producer

I have no connection with any camera company

On-line camera manual library

This is the full text and images from the manual. This may take 3 full minutes for the PDF file to download.

If you find this manual useful, how about a donation of \$3 to: M. Butkus, 29 Lake Ave., High Bridge, NJ 08829-1701 and send your e-mail address so I can thank you. Most other places would charge you \$7.50 for a electronic copy or \$18.00 for a hard to read Xerox copy.

This will allow me to continue to buy new manuals and pay their shipping costs.

It'll make you feel better, won't it?

**If you use Pay Pal or wish to use your credit card,
click on the secure site on my main page.**

how to use your ansco viking readyset

AnSCO

BINGHAMTON • NEW YORK

42 Printed in U.S.A. C-9671

how to use your

AnSCO

VIKING READYSET



your ansco viking readysset



*The Viking Readysset Camera
takes 8 exposures this size
(2¼ x 3¼") on size 120 film.*

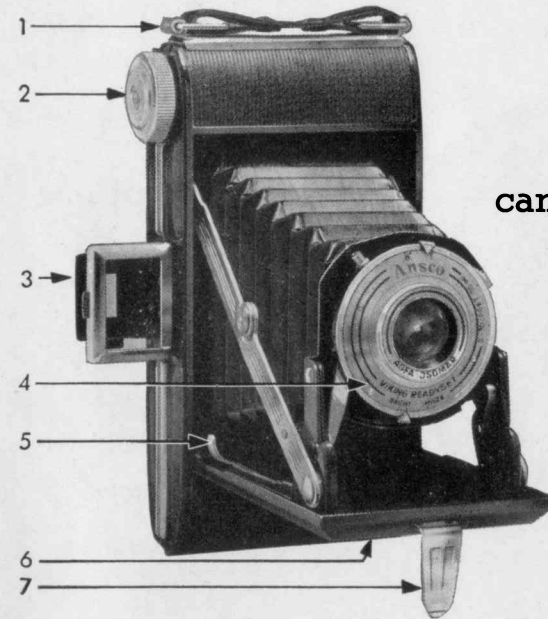
The Viking Readysset camera is the ideal choice for the amateur photographer who wants a good camera that is easy to handle, simple to

operate. The camera requires no focusing adjustments under normal picture taking conditions and has a supplementary built-in lens for close up pictures, which slips into place with the flick of a lever.

This camera has two diaphragm openings so that it is possible to control the amount of light entering the camera for taking pictures of maximum sharpness and detail on bright days as well as good pictures on dull, hazy days.

It is equipped with Instantaneous and Bulb shutter speeds and is synchronized for making flash exposures with either No. 5 and No. 25 or SM and SF flashlamps.

Before you take your first pictures, study the following instructions and pictures so that you are thoroughly familiar with all the camera's operations.



camera parts . . .

1. Opening device (camera back)
2. Winding knob
3. Eye-level view finder
4. Lens mount
5. Shutter release
6. Tripod socket
7. Standard and opening catch



lens mount . . .

- 8. Diaphragm setting lever
- 9. Distance focusing indicator
- 10. Exposure time lever
- 11. Flash connector

to open the camera front

To open the front of the camera, lift up on the catch just above the Ansco name plate. This releases the front so that it swings down and locks in position. This opening catch also becomes the standard for the camera.



to close the front

Press down the two side arm braces and bring the hinged camera front into position until it locks. The camera will not close unless the opening catch lies flat against the camera.

loading the camera . . .



to open the back . . .

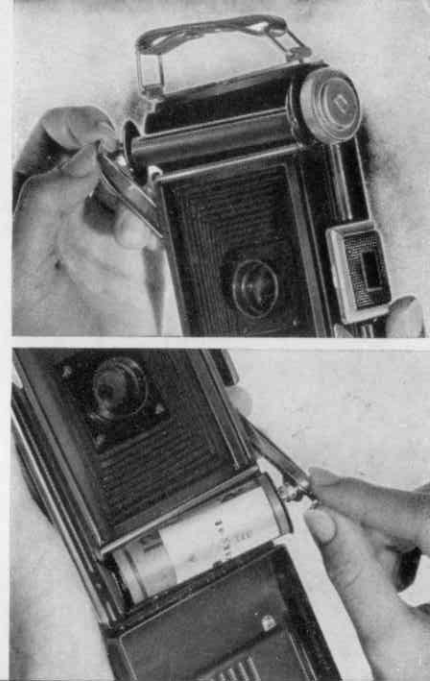
With the back of the camera facing you, press downward on the knurled lug which holds the camera strap (No. 1, page 3), slide the latch to the left and the camera back can be easily opened.

to load . . .

Make certain that the empty spool is in the upper chamber—the end

with the winding knob. To place it in this chamber, lift up on the swinging bracket, fit the slotted end of the spool over the winding key, and engage the other end in the retaining arm. Carefully push the arm back into position and make sure it is secure by giving the winding knob a few turns.

Lift up the swinging bracket on the opposite end and put a fresh roll of 120 film in the lower chamber in the same manner so the colored side of the protective paper will be uppermost when it is drawn across the back (see pic-





ture). Break the seal, remove the Ansco Guarantee bond and carry the paper *over* the two metal rollers and thread it into the long slot in the empty spool. Make certain the film travels straight so it will not bind and tear. Give the winding knob two half turns to secure the film in the spool.

Close the camera back, then slide the carrying strap brace into closed position, locking the back into place.

Swing open the metal cover on the red window and wind the film until

No. 1 appears. It will be preceded by an indicating hand and a series of dots. Keep the window covered except when winding the film.

simple to operate . . .

Now you are ready to take a picture. No meter readings are necessary, no accurate measuring is required. If it is a nice, sunny day, just set the indicator on **BRIGHT**. If it is a cloudy day, set the pointer on **HAZE**. If you





are taking a close-up picture—a person or nearby object—set the indicator at the 5-10 feet setting.* If you are photographing a scene or a distant building, set it at 10 feet to ∞ (infinity). Picture taking is as simple as that with the Viking Readyset—there is no fuss, no bother.

***automatic focusing reset**

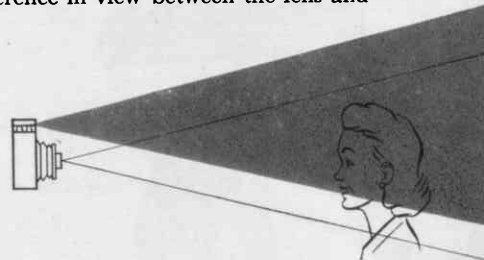
Each time the camera is closed, the focusing indicator will automatically reset to the 10 feet to infinity position.

Bring the view finder into position by raising the two hinged metal frames. Raise the camera to your eye and compose your picture within the outer metal frame. Hold the camera steady and release the shutter with a firm, easy pressure.

If the composition of your picture would be improved by a horizontal view, turn the camera on its side to sight through the view finder.

When photographing a close up object, sight a bit above the subject in order to compensate for the slight difference in view between the lens and the view finder.

After each picture wind the film until the next number appears in the red window on the back of the camera. When the 8th exposure has been made, wind the film until it disappears from view in the red window.





bulb exposures

When the light is poor or longer exposures are necessary, set the exposure indicator on B. Press and hold the shutter release down for the desired length of the exposure. The shutter will remain open until pressure is released. Use a tripod or other firm support for these exposures.

flash exposures

Excellent flash pictures can be made indoors or out, day and night by using your Viking Readyset with the Ansco Flash Unit. Follow the directions packed with the flash unit.

Use the following table as a guide for flash exposures:

FLASH EXPOSURE GUIDE	Distances from Camera to Subject			
	No. 5 or 25 Flashlamps "Haze" "Bright"		SM or SF Flashlamps "Haze" "Bright"	
Plenachrome	8-14	4-8	5-8	4-5
Supreme	10-18	5*-10	6-10	4-6
Superpan Press	12-25	6*-12	7-12	4-7

**When taking flash pictures at short distances, diffuse the light by covering the reflector with a single thickness of white handkerchief.*

to unload the camera . . .

Open the back of the camera and pull forward the swinging bracket to release the film. Take out the film and seal it with the "Exposed" sticker.

Remove the empty spool and put it in the upper chamber so the camera will be ready for the next roll of film.



camera care . . .

Your Viking Readysset is a fine camera and should be treated with care. It should not be allowed to lie in the sun or left in the glove compartment of your car. At intervals clean the outside and inside elements of the lens with a clean soft cloth or lens tissue. Blow out any small particles of dust which may gather inside the camera.

accessories . . .

for the viking readysset

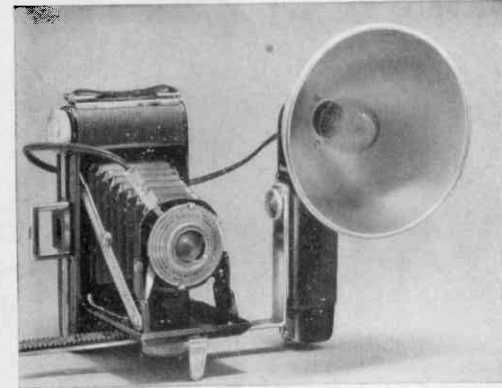
ansco flash unit

Check these features:

For use with flash cameras with either 3mm continental or ASA bayonet type contacts

Takes two Size C batteries or battery capacitor cartridge

Battery case outlet accepts any standard household extension cord for multiple flash lighting
Flashlamp ejector





the viking readyset eveready carrying case

There is an Eveready Carrying Case for your Viking camera. Made of genuine cowhide, it will protect your camera from dust, rain and accidental knocks. It is handy to use—just unsnap the button and the front swings away. Ask your dealer for the Viking Readyset Eveready Case, JN449.

ansco lens attachments

The Anso Yellow Y45 Filter, Size 27, may be used over the camera lens for getting better cloud effects in your pictures. For pictures of objects $2\frac{1}{2}$ or 3 feet from the camera, use an Anso Portrait Lens over the lens, using the 5 to 10 feet setting.



choose one of the Guaranteed Anso Films for your camera

PLENACHROME — the All-Weather Film. A fast, orthochromatic film for brilliant outdoor pictures in any weather. Available in single rolls and 3-Roll Economy Pak.

SUPREME—a fast panchromatic film for indoor or outdoor photography under natural or artificial light.

SUPERPAN PRESS—An extremely high-speed panchromatic film especially designed for use under adverse light conditions as well as all normal types of photography.

Anso GUARANTEE

This camera is manufactured from the finest quality materials and has been produced by highly skilled craftsmen. It is guaranteed by Anso for a period of 12 months from date of purchase against defects due to workmanship or materials used in manufacture. Should anything go wrong, do not try to repair it yourself. Take it to your photographic dealer, or if not convenient, send it to Camera Repair Service, Anso, Emma Street, Binghamton, N. Y.